



81RG-Type Controller



※ The Most Familiar Solution for Machine Tending

- 7" Teach pendant. Support MPG, Emergency Stop, DMS, Mode Switch
- Support servo communication M3 \ EtherCAT and industrial communication Modbus TCP \ Ethernet/IP
- Standard with 4 axes. Support control multi robot

※ Including Driver , Motor, IO Device

- Seamless integration servo system
- ETB3636 IO Board. Specifically designed for machine tools & robots

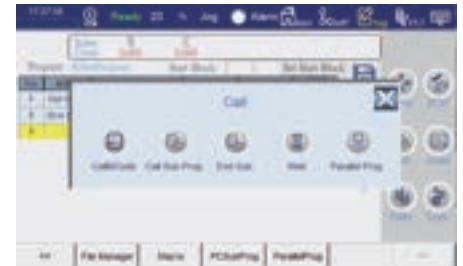
※ Software Designed for Machine Tending

- Easy conversational programming with low learning costs
- Parameterized matrix pallet, no need for repeated teaching point

Software Introduce

※ Conversational Programming

- Easy conversational programming without writing codepoint
- Quick adjustment of operational processes



※ Pallet Function

- Parameterized matrix pallet, no need for repeated teaching point
- Single-point and three-point teaching methods, flexible adjustment according to requirements



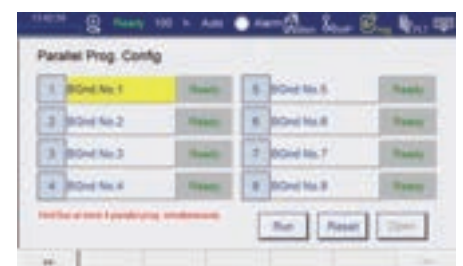
※ Pallet Function

- Collision Detection Function: Detection of abnormal external forces and collision retraction
- Dynamic On/Off switches to meet different scenarios



※ Pallet Function

- Parallel programs can run independently with main program without revising the PLC
- Supports up to 8 parallel programs.



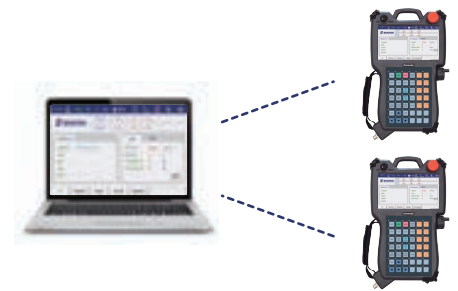
※ Auto Teach CNC Chuck Function

- Auto teaching reference points via force sensing
 - Applied to situations on machine tool chucks where space and visibility make teaching points difficult
-



※ Remote Support

- Support remote diagnostics, data backup, and software installation
 - Remote diagnosis of issues without being on-site
-



※ NETPLC CNC Connecting Function

- Quick integration with SYNTEC and other machine tools
 - Solve the time-consuming issue of IO wiring
-



※ Safety Function

- Prevent machine collision by setting prohibition zones
 - Support custom prohibition zones meet different applications
-



Hardware Introduction

※ 81R PLUS Teach Pendant

- Increased system performance by 50% through hardware upgrade.
- Compatible with programs and settings from 81R teach pendant.



※ ETB3636 IO Board

- Supports 36 inputs and 36 outputs and PNP and NPN connection methods.
- Utilizes EtherCAT communication, enabling flexible expansion of EtherCAT IO modules and servo drives.
- Pre-defined and segmented IO points for machine tools, grippers, material trays, etc., reducing wiring and setup time.



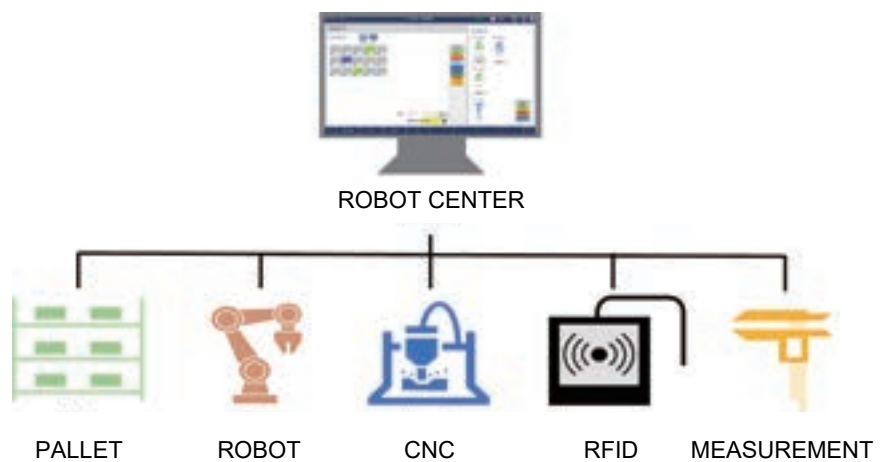
Case Study



※ 1 ROBOT – Multi CNC Tending



※ 2 Robot – Multi CNC Tending



※ Robot Center Solution

TAIWAN

Taiwan (Hsinchu)
SYNTEC Technology Co., Ltd
ADD : No.25, Yanfa 2nd Rd., East Dist.,
Hsinchu City 300, Taiwan (R.O.C.)
TEL : +886-3-6663553
FAX : +886-3-6663505
EMAIL : sales@syntecclub.com.tw

Taichung
SUN-CNC Co., Ltd
ADD : No. 22, Lane 428, Section 1, Fengyuan
Boulevard, Fengyuan District
TEL : +886-4-25337731
TAX : +886-4-25349224

TANLU-CNC Co., Ltd
ADD : No.42, Jingming Road, Xitun District,
Taichung City, Taiwan (R.O.C.)
TEL : +886-4-23102626
TAX : +886-4-23102636

Tainan
ADD : No. 218, Denan Road, Rende District,
Tainan City, Taiwan (R.O.C.)
TEL : +886-6-2796707
TAX : +886-6-2796705

CHINA

Jiangsu
SYNTEC TECHNOLOGY(Suzhou)CO.,Ltd
ADD : Building B, No.9 Chunhui Road,Suzou Industrial
Park,China
TEL : 0512-69008860
FAX : 0512-65246029

**SYNTEC TECHNOLOGY(Suzhou)CO.,Ltd WuXi
Office**
ADD : B906, Yuye Network Building, 68 Exploration
Road, Huishan District, Wuxi City, Jiangsu Province,
China
TEL : 15295664580

**SYNTEC TECHNOLOGY(Suzhou)CO.,Ltd
Changzhou Office**
ADD : Room 2217, Yatal Fortune Center, No. 1
Huayuan Street, Hutang Town, Wujin District,
Changzhou City, Jiangsu Province, China
TEL : 18168828572

**SYNTEC TECHNOLOGY(Suzhou)CO.,Ltd
XuZhou Branch**
ADD : Room 1503, South of Territorial Sea Office
Building, No. 66, Kumpeng Road, Xuzhou Economic
Development Zone, Jiangsu Province, China
TEL : 13656201020

**SYNTEC TECHNOLOGY(Suzhou)CO.,Ltd
NanJingBranch**
ADD : Room 712, Research Building 1, Lianggang
Park, 117 Suyuan Avenue, Jiangning District, Nanjing
City, Jiangsu Province, China
TEL : 025-52717702
FAX : 025-52717710

**SYNTEC TECHNOLOGY(Suzhou)CO.,Ltd
NanTong Branch**
ADD : Room T3-1301, No. 108, Gangzha District,
North Street, Nantong City, Jiangsu Province, China
TEL : 0513-89077025
FAX : 0513-89072057

**SYNTEC TECHNOLOGY(Suzhou)CO.,Ltd
NanTong Branch Yanchen Office**
ADD : Room 401, building 13, phase 9, Zhongnan
Century City, Yandu District, Yancheng City, Jiangsu
Province
TEL : 18625235150

Shaanxi
SYNTEC TECHNOLOGY(Suzhou)CO.,Ltd XiAn
Branch
ADD : Room 1, 1328, Building 4, Yicui Garden I
Duhui, No. 10, South Tangyan Road, Xi'an
High-tech Zone
TEL : 029-88287423

**SYNTEC TECHNOLOGY(Suzhou)CO.,Ltd BaoJi
Office**
ADD : Room 1702, Unit 3, Building 8, Dongling Xishiji,
Binhe North Road, Jintai District, Baoji, Shaanxi
Province, China

AROUND THE WORLD

Malaysia
MYSYNTEC TECHNOLOGY SDN BHD
ADD : 16, Jalan Astana 1F, Bandar Bukit Raja, 41050
Klang, Selangor, Malaysia
TEL : +603-33115887
EMAIL : sales.malaysia@syntecclub.com

Thailand
MYSYNTEC TECHNOLOGY SDN BHD
ADD : 78/38 Kheha Romklao Rd., Khlong Song Ton Nun,
Lat Krabang,Bangkok, 10520
TEL : +662-006-5738

Vietnam
SYNTEC VIET NAM TECHNOLOGY CO., LTD
ADD : 3F, No. 36, A4 Street, Ward 12, Tan Binh District,
Ho Chi Minh City, VietNam
TEL : +84-938332829
FAX : +84-2822535556
EMAIL : andyngo@vnsyntec.com.vn

India
SYNTEC TECHNOLOGY INDIA PVT.LTD
ADD : Champaka building, P-6C.2nd floor, peenya industrial
area Near peenya police station Bangalore-560058
TEL : +91-9916146577
E-mail : raghavendra.naik@syntecclub.com

Turkey
SYNTEC TEKNOLOJİ LTD (Istanbul)
ADD : Küçükkalköy Mah. Vedat Günyol Cd. Defne Sok.
No:1 D:1502 Flora Residence,34750 Atasehir/Istanbul, Türkiye
TEL : +90-216-2662475

USA
USA SYNTEC ECHNOLOGY, INC (South California)
ADD : 2841 Saturn St, #D, Brea, CA 92821
TEL : +1909-551-0187
EMAIL : info@syntecamerica.com

korea
AISYNTECH (Service Partner)
ADD : 312Ho 103Dong 88, Siwon-ro, Yeongtong-gu, Suwon-si,
Gyeonggi-do, 16681, Rep. of KOREA
TEL : +82 70-8615-1134
EMAIL : thtechvt100@gmail.com

Guangdong
SYNTEC TECHNOLOGY(Suzhou)CO.,Ltd GuangDong
Branch
ADD : Factory 201or 301, Building A, No.10,Nanjiang
Third Road, Zhujiang Street, Nansha District, Guangzhou
City
TEL : 020-39089367
FAX : 020-39089791

**SYNTEC TECHNOLOGY(Suzhou)CO.,Ltd DongGuan
Branch**
ADD : 0769-816611ng 1, Mobile Group, No. 522, Zhen
'an East Road, Chang'an Town, Dongguan City,
Guangdong Province, China
TEL : 0769-81660318

**SYNTEC TECHNOLOGY(Suzhou)CO.,Ltd GuangZhou
Branch**
ADD : Room 404, Building 2, Seven Friendship Building,
No. 8 Luojiacun Section, Fuyi Road, Dalong Street,
Panyu District, Guangzhou City, Guangdong Province
TEL : 020-34583040
FAX : 020-34583220

**SYNTEC TECHNOLOGY(Suzhou)CO.,Ltd ChangPing
Branch**
ADD : Floor 5, Huilong Building, No. 8, Zhanqian 1st
Road, Banshi Village, Changping Town, Dongguan City,
Guangdong Province, China
TEL : 0769-82828802
FAX : 0769-82828820

**SYNTEC TECHNOLOGY(Suzhou)CO.,Ltd ShenZhen
Branch**
ADD : 406, Block E, Haowei new material industrial
park, No. 8, Qinglan 1st Road, Zhukang community,
Longtian street, Pingshan District, Shenzhen,
Guangdong
TEL : 0755-84320380
FAX : 0755-84559490

**SYNTEC TECHNOLOGY(Suzhou)CO.,Ltd JiangMen
Branch**
ADD : Room 02, 7th Floor, Torch Building, Hi-Tech
Zone, 288 Jinou Road, Jianghai District, Jiangmen City,
Guangdong Province - China
TEL : 0750-3762143

Henan
SYNTEC TECHNOLOGY(Suzhou)CO.,Ltd LuoYang
Branch
ADD : Room 704, Runsheng Building, Intersection of
Heluo Road and Sanshan Road, Hi-tech Zone, Luoyang,
Henan Province, China
TEL : 0379-65110352
FAX : 0379-65110352

**SYNTEC TECHNOLOGY(Suzhou)CO.,Ltd
ShiJiaZhuang Office**
ADD : 4-3-801, Reyi Community, No. 8 Huaxing Road,
Qiaoxi District, Shijiazhuang City, Hebei Province, China
TEL : 18622728669
FAX : 0379-65110352

Fujian
SYNTEC TECHNOLOGY(Suzhou)CO.,Ltd XiaMen
Branch
ADD : Floor 3, No. 2, Jixiang West Road, Xinmin Town,
Tong'an District, Xiamen City, Fujian Provinc
TEL : 0592-7191901
FAX : 0592-7220536

Zhejiang
SYNTEC TECHNOLOGY(Suzhou)CO.,Ltd HangZhou
Branch
ADD : 1202, Unit 2, Building 1, Dikai Building, No.471
Jincheng Road, Xiaoshan District, Hangzhou City,
Zhejiang Province, China
TEL : 0571-82751187

**SYNTEC TECHNOLOGY(Suzhou)CO.,Ltd HangZhou
Branch Jinhua Office**
ADD : Room C204, No. 1729, Dongshi North Street,
Xinshi street, Wucheng District, Jinhua City, Zhejiang
Province
TEL : 1599-0026533

**SYNTEC TECHNOLOGY(Suzhou)CO.,Ltd WenZhou
Branch**
ADD : 1205-3, Honghai building, Ouhai District,
Wenzhou City, Zhejiang Province
TEL : 0577-86158619

**SYNTEC TECHNOLOGY(Suzhou)CO.,Ltd NingBo
Branch**
ADD : Room 1207, Ivy league Building, No.262, Lane
416, Zhaohui Road, Jianguo District, Ningbo City,
Zhejiang Province, China
TEL : 0574-87750305

**SYNTEC TECHNOLOGY(Suzhou)CO.,Ltd WenLing
Branch**
ADD : Room 509, Haocheng Service Building, No. 838,
Wanchang Middle Road, Chengdong Street, Wenling
City, Taizhou City, Zhejiang Province, China
TEL : 0576-86138372
FAX : 0576-86119106

**SYNTEC TECHNOLOGY(Suzhou)CO.,Ltd YuHuan
Office**
ADD : Room 302, Unit 2, Building 1, Hualong Times
Square, 226 Provincial Road, Chunmen Town, Yuhuan
County, Taizhou City, Zhejiang Province, China
TEL : 13088636567

Chongqing
SYNTEC TECHNOLOGY(Suzhou)CO.,Ltd ChongQing
Branch
ADD : 1007, Building 4, No.62, East Section of Talshan
Avenue, Yubei District, Chongqing
TEL : 023-67913296
FAX : 023-6734382

**SYNTEC TECHNOLOGY(Suzhou)CO.,Ltd ChengDu
Office**
ADD : ADD : Room102, Unit 1, Building 24, Jiazhaoye
Medam City, No.898, Section 2, Xingxing Road,
Dongsheng Street, Shuangliu District, Chengdu City,
Sichuan Province, China
TEL : 18302862629

Tianjin
SYNTEC TECHNOLOGY(Suzhou)CO.,Ltd TianJin
Branch
ADD : No.37, Area A, Qiao Rülifeng Garden, No.7
Weihuan West Road, Xiqing District, Tianjin, China
TEL : 022-23738182

Shandong
SYNTEC TECHNOLOGY(Suzhou)CO.,Ltd JINan
Branch
ADD : 502, Unit 3, Building 11, Luneng Kangqiao, No.
28, Sankongqiao Street, Tianqiao District, Jinan,
Shandong
TEL : 0531-85907208
FAX : 0531-85905708

**SYNTEC TECHNOLOGY(Suzhou)CO.,Ltd QingDao
Office**
ADD : Room 1004, Unit 2, Building 14, Jinri Zidu,
Tianshan Road, Chengyang District, Qingdao,
Shandong
TEL : 18663779803

**SYNTEC TECHNOLOGY(Suzhou)CO.,Ltd TengZhou
Office**
ADD : 13 households, row 1, Xiaokang village, Yucai
Road community, Beikin street, Tengzhou City,
Shandong Province
TEL : 15098706233

Hubei
SYNTEC TECHNOLOGY(Suzhou)CO.,Ltd WuHan
Branch
ADD : 2003-2006, Building A, Optics Valley
International, Jiayuan Road, No.456 East Luoyi Road,
Hongshan District, Wuhan City, Hubei Province, China
TEL : 027-87638876
FAX : 027-87204137

Liaoning
SYNTEC TECHNOLOGY(Suzhou)CO.,Ltd ShanYang
Branch
ADD : Room 1212, Tianxin Building, 17 Jianshe West
Road, Tixi District, Shenyang City, Liaoning Province,
China, China
TEL : 18698806526

Anhui
SYNTEC TECHNOLOGY(Suzhou)CO.,Ltd ShenYang
Branch
ADD : Room 1005, block B, Wanda Ginza, rongchuang
Meo, Binhu, Hefei, Anhui Province,China.
TEL : 0551-63814183
FAX : 0551-63814183

SYNTEC
TECHNOLOGY CO.,LTD.

SYNTEC Technology Co., Ltd.
No.25, Yanfa 2nd Rd., East Dist.,
Hsinchu City 300, Taiwan (R.O.C.)

☎ 886-3-6663553
☎ 886-3-6663505
✉ sales@syntecclub.com.tw

Suzhou SYNTEC Equipment Co.,Ltd.
No. 9th, Chun Hui Road, Suzhou
Industrial Park, Jiangsu Province

☎ 86-512-69008860
☎ 86-512-65246029
✉ service@syntecclub.com.cn



<http://www.syntecclub.com.tw>

Copyright © SYNTEC Technologies Corp.
©2024.07_rev.1 (PRINTED IN TAIWAN)

*SYNTEC reserves the right to revise catalog information at any time without notice due to typographical errors or any errors.